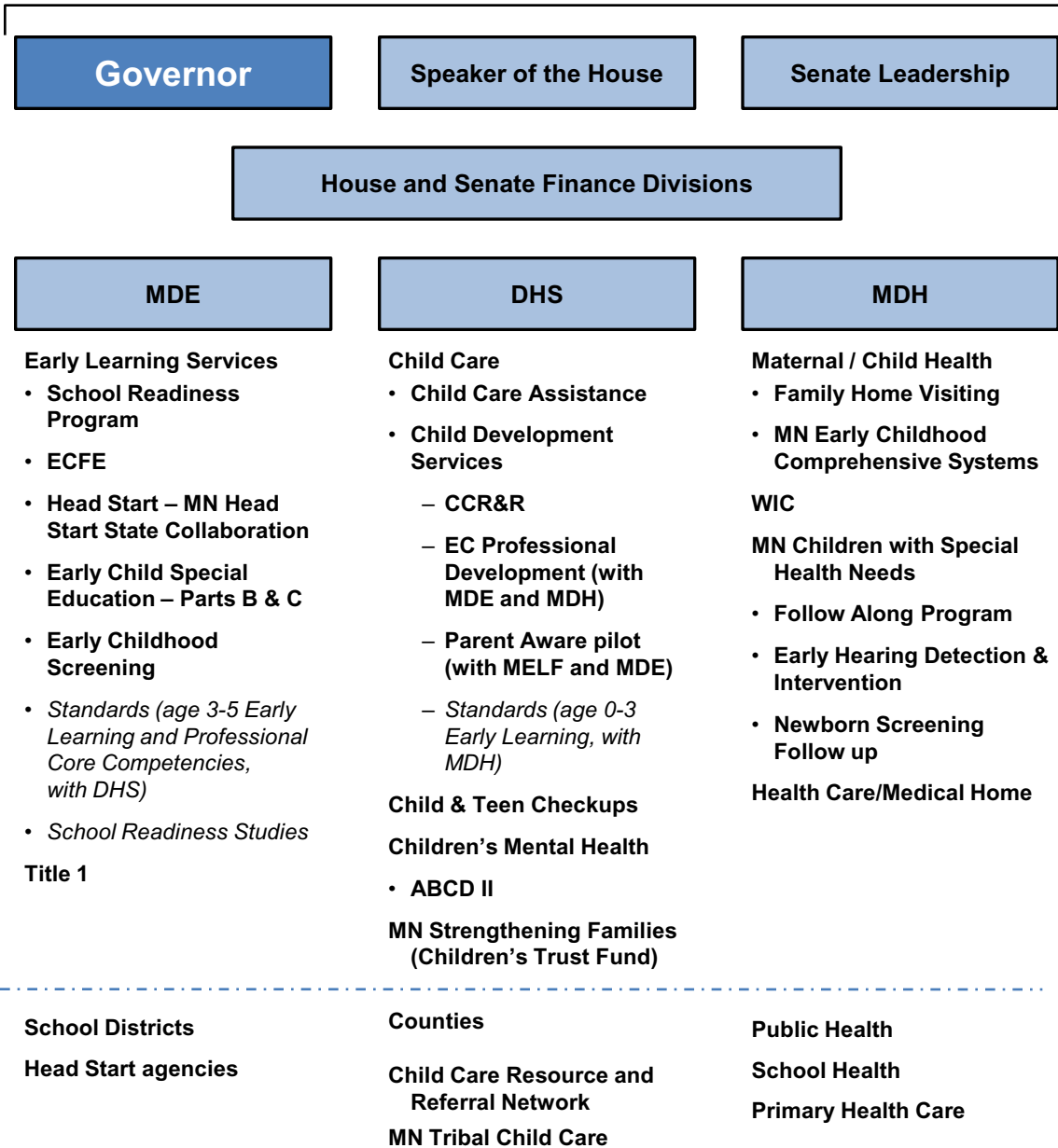
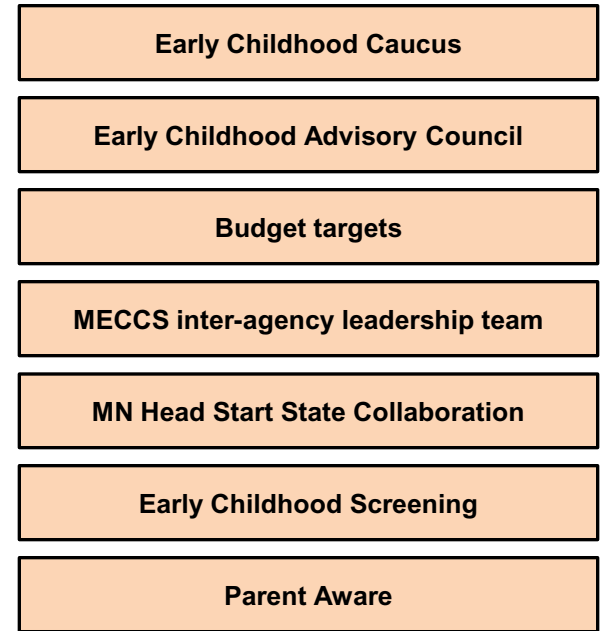


Public early care and education governance



Leverage points



Purposes of exerting leverage

- Raise priority of early childhood
- Ensure equity and inclusion for rural, cultural, tribal, and immigrant communities in actions and in measuring access, quality, and outcomes
- Strengthen connections across early learning, health and mental health, family support, and special needs services for family well-being and professional development
- Promote public/private partnerships to blend funding and extend comprehensive services to more low-income families
- Develop data sources and ways to share data to ensure equity, inclusion, quality, and results